

## DULWICH HAMLET JUNIOR SCHOOL: Overview of School Development Priorities 2016 -2019 v3



### **EFFECTIVENESS OF LEADERSHIP AND MANAGEMENT (Ofsted 1)**

- Continue to maximise the benefits of working within a MAT, working in partnership with The Belham Primary School and potential future partners
- Develop the effectiveness of Governance, both at LGB and Committee level in order to strategically support and challenge
- Leaders at all levels have a shared sense of purpose and contribute meaningfully to the strategic development of the school
- Ensure a continuous process of self-evaluation and reflection is integrated into our cycle of school development, and is a culture that is evident at all levels: pupils, teachers, middle/senior leaders and governing body
- Continue to promote a successful partnership between home and school by improving communication systems with our parent body, and within school itself
- Strengthen our existing community links, including our collaborations with other local schools
- Implement a new cloud-based information management system
- Enhanced reporting and more effective communication around Pupil Premium
- Ensure website is compliant with the information academies should publish
- Begin the process of reviewing the intent, implementation and impact of our broad and balanced curriculum (added 2018)

### **QUALITY OF TEACHING, LEARNING AND ASSESSMENT (Ofsted 2)**

- Provide outstanding quality first teaching that motivates and challenges all pupils
- Further develop skills in differentiation, with planning clearly supporting all learners at all stages, particularly those below expectations in literacy and maths
- Improve the quality and effectiveness of feedback to pupils in order to move learning on
- Continue to develop high standards of presentation and a sense of pride in books, as well as in work displayed around the school
- Review long and medium term plans for writing, incorporating non-fiction text types whilst maintaining creative and professional freedom in use of high quality texts
- Continue to promote reading for pleasure; create a library space that engages 'hard to reach' children and raises the profile of reading across the school
- Maths: deliver consistently outstanding learning based on a Mastery philosophy
- Humanities: implement enquiry based learning which results in high quality outcomes with a focus on writing across a range of genres
- STEM: embed creative, imaginative and engaging activities to deliver high quality cross-curricular learning in Science, Maths, Design Technology and Computing, sharing best practice across the MAT and with other local schools
- Ensure robust induction systems and personalised CPD secures good+ teaching and learning for early development teachers, as well as teachers & support staff new to DHJS

### **PERSONAL DEVELOPMENT, BEHAVIOUR AND WELFARE (Ofsted 3)**

- Ensure that school life is built around our shared 'Hamleteer' values, which are promoted and articulated by both pupils and staff, and known to our parent community
- Develop a new Behaviour Policy that reflects our continual aim of striving for excellence in behaviour for learning
- Ensure that pupils' behaviour outside of lessons is impeccable
- Increase attendance to 97% and continue to improve punctuality
- Raise the profile of and further develop both pupils and teachers understanding of E-Safety, improving parental engagement/participation within our work on digital and social media
- Safeguarding: Develop an internal safeguarding monitoring system that goes beyond compliance
- Ensure that we are fully compliant with the Prevent strategy
- Pupil Voice: Further develop pupils as Hamlet Ambassadors, including role of the House Captains and introduction of a School Council
- Devise our own Early Help system
- Monitor equality of access to provision for all pupil groups – SEN, disadvantaged and gender

### **OUTCOMES FOR PUPILS (Ofsted 4)**

- Combined reading, writing and maths target to be consistently above 88% for expected and 30% for greater depth
- Reading, writing and maths progress to be consistently at or above +1.0
- SEN pupil outcomes to be in line with or above national SEN averages in reading, writing and maths
- Disadvantaged outcomes to be in line with or above national non-disadvantaged outcomes in reading, writing and maths
- Implement new assessment system that tracks attainment and achievement, as well as identifies gaps
- Develop a clear assessment timeline of events, with a rigorous programme of analysis

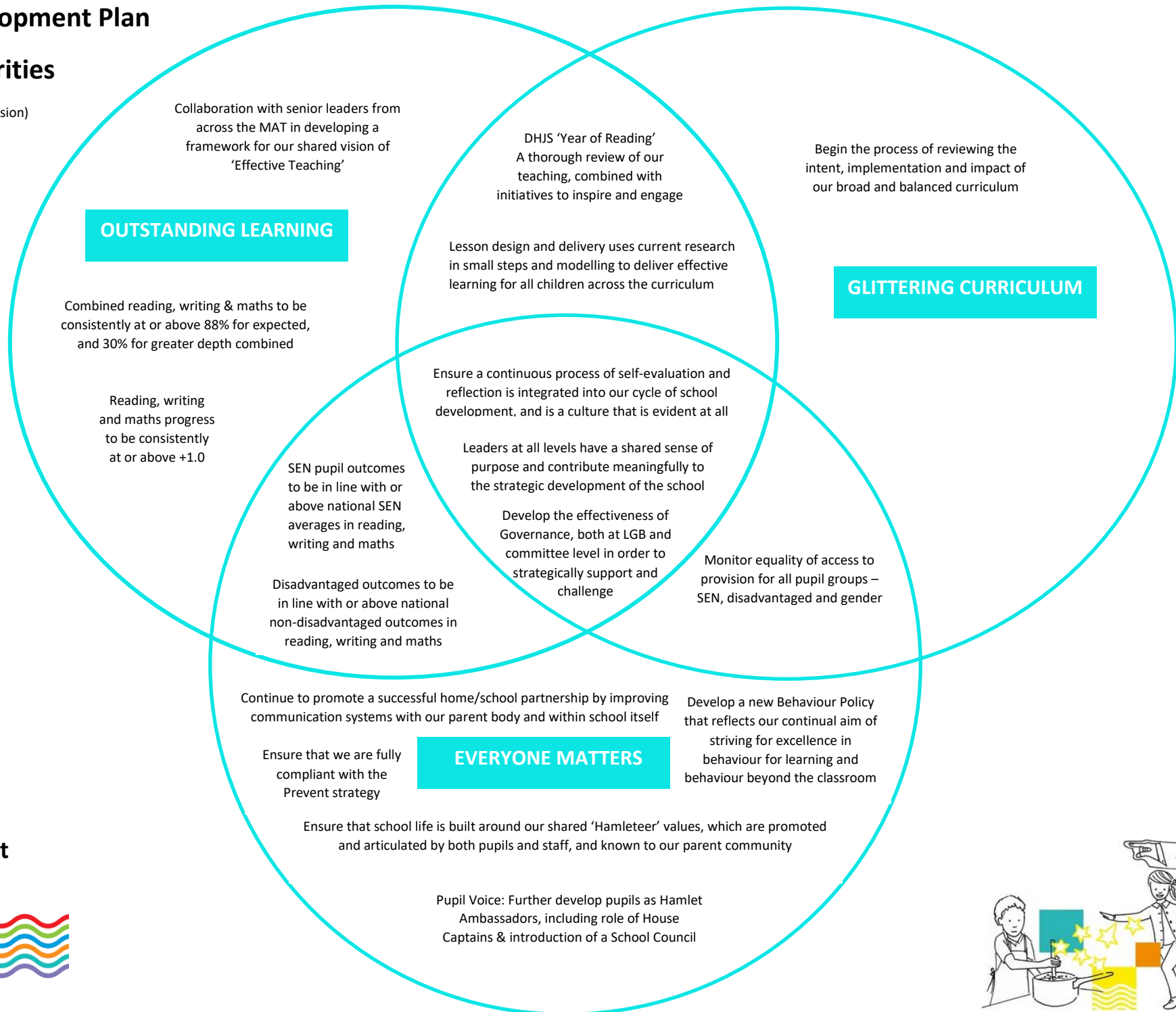
### **BUSINESS PLAN**

- Develop a secure and robust IT infrastructure
- Improve the appearance and functionality of our Before and After School Care Room and review the quality of provision
- Submit CiF bids in regard to roof repair for Gilkes and Griffin roofs, and for improved fire safety/electrical systems
- Refurbish Village Hall
- Ensure Health and Safety policies and procedures are up to date and that the school is fully compliant

# School Development Plan

## 2018-19 Priorities

(aligned with our School Vision)



**Dulwich Hamlet  
Junior School**

